

# **Alternatives to the Circumferential Highway Chittenden County, Vermont**

CIRC Alternatives Task Force  
Process and Outcomes

Presentation to the  
Vermont House and Senate Transportation Committees

Friday, February 6, 2015

**Charlie Baker**, Chittenden County Regional Planning Commission

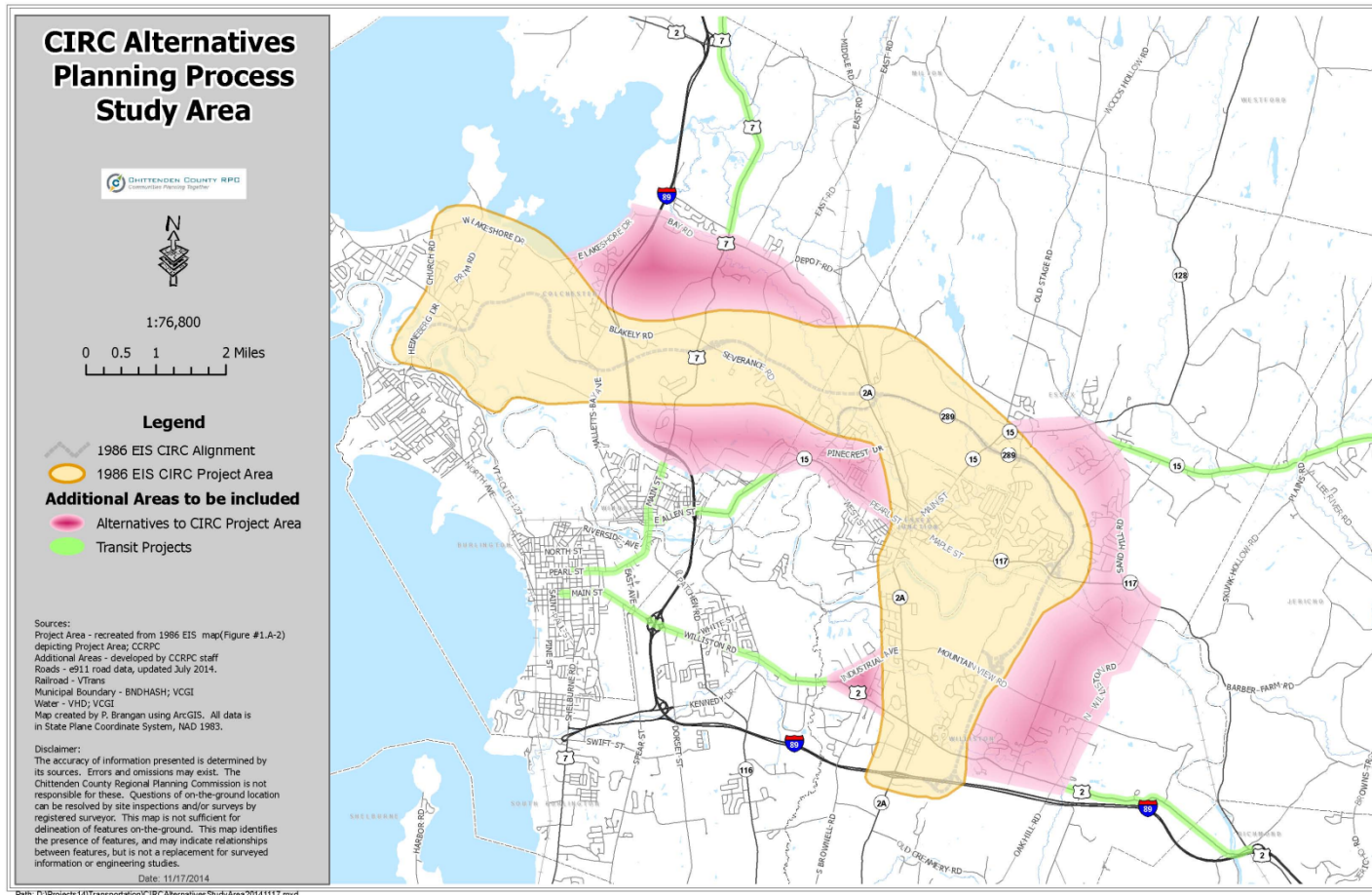
**Ken Robie**, VTrans Project Delivery Bureau

# Agenda

- Introduction to the CIRC Alternatives: Why this is important
- The CIRC Alternatives Task Force – Process and Outcomes
- Project Status Presentation
- Questions

# Introduction to the CIRC Alternatives:

- Identify projects to implement the purpose and need that the Circ highway was originally intended to address.



## Background

- Expect significant growth in the next 20 years (17,000 people and 32,000 jobs).
- Per our *2013 ECOS Plan* - targeted to the 15% of our county planned for infill growth.
- Supports our economy, historic settlement patterns, and preserves our rural community character
- Balanced plan of transportation investments

# **The CIRC Alternatives Task Force – Process**

Task Force Structure

Task Force Process

Task Force Outcomes and Regional Impact

# **Task Force Structure**

Representation from All Constituencies in the CIRC Study Area

## **The “CIRC” Communities**

Williston, Essex, Essex Junction, Colchester

## **Environmental Community**

Vermont Natural Resources Council

Conservation Law Foundation

Preservation Trust of Vermont

## **Business Community**

IBM

Greater Burlington Industrial Corporation (GBIC)

General Liaison

## **Regional Transportation Partners**

CCTA and Local Motion (Bike/Ped Representation)

## **State & Federal Agencies**

Agencies of Transportation, Commerce, Natural Resource

Federal Highway Administration

**Staffed by the Chittenden County Regional Planning Commission  
and numerous consulting firms**

# Task Force Process

1. Identification of the **Area of Impact**
2. Agreement by Task Force on **Engagement & Decision Making**
3. **Prioritization** of Projects which could move quickly for **Phase I**
4. Submission of **Phase I Project Recommendations** to the 2012 General Assembly as part of the Transportation Capital Program
5. **Prioritization** of Planning Studies to be completed for **Phase II**
6. Submission of **Phase II Project Recommendations** to the 2013 General Assembly as part of the Transportation Capital Program
7. Completion of **Williston Essex Network Transportation Study** (WENTS) to identify projects for this sub area of the CIRC Study Area
8. **Completion of Scoping projects** identified through the WENTS process and other projects prioritized in Essex and Colchester for **Phase III**
9. Submission of **Phase III Project Recommendations** to the 2014 General Assembly as part of the Transportation Capital Program

## **Summary of Circ Alternatives – “by the numbers”**

- 7+ miles of improved roadways including enhanced roadway shoulders
- 26 intersection improvements (capacity & adaptive signal control)
- Upgrading of two Interstate 89 interchanges (Exit 16 in Colchester and Exit 12 in Williston)
- 4 new transit routes
  - commuter service along VT 15 from Jeffersonville to Burlington,
  - mid-day service from the Village of Williston to Burlington,
  - service along US Route 7 (Milton, Colchester to Burlington), and
  - potential service from Essex, thru Williston to Waterbury/Montpelier.
- Approximately 120 new park and ride spaces.
- Improved regional connectivity for walking and biking with over 42,000 feet of shared use paths and sidewalks.



# **Phase I Projects Added to Capital Program FY2013**

## **Interstate 89 Exit 16 Improvements, Colchester**

FY2016 Front of the Book – Safety & Traffic Operations

Construction to begin in 2016 - \$8.0M

## **VT 2A/VT 289 Interchange Improvements, Essex**

FY2016 Front of the Book – Safety & Traffic Operations

Construction to begin in 2017 - \$1.5M

## **Crescent Connector, Essex Junction**

FY2016 Front of the Book – Roadway

Construction to begin in 2016 - \$6.0M

## **VT 2A/James Brown Drive, Williston**

FY2016 Front of the Book – Roadway

Construction to begin in 2017 - \$1.9M

## **Transportation Demand Management (TDM)/Transportation Systems Management (TSM), Regional (Transit, TDM/TSM)**

Programmed

## **Phase II Projects Added to Capital Program FY2014**

### **Severance Corners Improvements, Colchester**

FY2016 D&E – Safety & Traffic Operations

Construction anticipated in 2020 - \$4.5M

### **VT15 Multi-Use Path, Winooski, Colchester, Essex, and Essex Junction**

FY2016 Front of the Book – Bike & Pedestrian Facilities

Construction to begin in 2018 - \$1.1M

### **VT15/Sand Hill Road Intersection, Essex**

FY2016 Front of the Book – Safety & Traffic Operations

Construction to begin in 2019 - \$1.0M

### **VT15 Improvements – Post Office Square to 5-Corners, Essex Junction**

FY2016 Front of the Book – Roadway

Construction to begin in 2018 - \$1.8M

### **US2/Trader Lane Traffic Signal, Williston**

FY2016 Front of the Book – Safety & Traffic Operations

Construction to begin in 2017 - \$1.2M

### **Adaptive Signal Control, Go! Chittenden County Program Expansion, CCTA Commuter Service – Programmed**

# Phase III Projects Added to Capital Program FY2015

## WILLISTON

- **I-89 Exit 12 Interchange Improvements, Williston**
  - New southbound VT2A auxiliary lane; Signal Optimization; New shared-use path from Police Barracks to Hurricane Lane
  - New Grid Streets and At-Grade Intersection on VT2A between I-89 and Marshall Avenue
  - Diverging Diamond Interchange and related improvements
  - VT2A Boulevard Upgrade from Grid Street Intersection to Taft Corners  
FY2016 D&E – Roadway – \$45.6M
- **Industrial Ave/Mountain/VT2A View Rd Intersection Improvements and Additional Lane on VT2A to James Brown Drive, Williston**  
FY2016 D&E – Safety & Traffic Operations - \$5.3M
- **New US 2 Taft Corners to Williston Village Shared Use Pathway – North side Alignment, Crossing, Village Sidewalk, Williston**  
FY2016 Candidate – Bike & Pedestrian Facilities - \$2.8M
- **New Mountain View Road and Redmond Road Shoulders, Williston**  
FY2016 Candidate – Roadway - \$3.5M
- **New VT2A Taft Corners Area Sidewalks/Shared Use Paths, Williston**  
FY2016 Candidate – Bike & Pedestrian Facilities - \$650k

# Phase III Projects Added to Capital Program FY2015

## ESSEX

- **VT117/North Williston Road Intersection Improvements, Essex**  
FY2016 D&E – Safety & Traffic Operations - \$1.6M
- **VT117/North Williston Road Hazard Mitigation Improvements - 6' Box Culvert, Safety Enhancements & Armoring, Essex**  
FY2016 Candidate – Roadway - \$670k
- **New VT15 Old Stage Road to Essex Way Sidewalk, Essex**  
FY2016 Candidate – Bike & Pedestrian Facilities - \$160k
- **VT15/Susie Wilson Road/Kellogg Road Corridor and Intersection Improvements, Essex**  
FY2016 D&E – Roadway - \$8.5M

# **Phase III Projects Added to Capital Program FY2015**

## **COLCHESTER**

- **VT2A Colchester Village Main Street and Mill Pond Road/East Road Intersection Improvements, Colchester**  
FY2016 D&E – Roadway - \$3.9M
- **VT127 Blakely Road/Laker Lane Intersection Improvement, Colchester**  
FY2016 D&E – Safety & Traffic Operations - \$360k
- **VT127 Prim Road/West Lakeshore Drive Intersection Improvement, Colchester**  
FY2016 D&E – Roadway - \$1.7M
- **Mill Pond Road/Severance Road Intersection Improvements and New Shared Use Path - South Side Alignment, Colchester**  
FY2016 Candidate – Bike & Pedestrian Facilities - \$2.4M
- **New CCTA Commuter Service: Milton/Colchester to Burlington - \$70k**

# **Phase III Projects Added to Capital Program FY2015**

## **CCTA Commuter Service**

- **Milton/Colchester to Burlington Commuter Service**  
Programmed - \$70k
- **Essex/Williston to Waterbury/Montpelier Commuter Service and Park & Rides**  
Programmed - \$1.5M